



GEORGIAVIEW

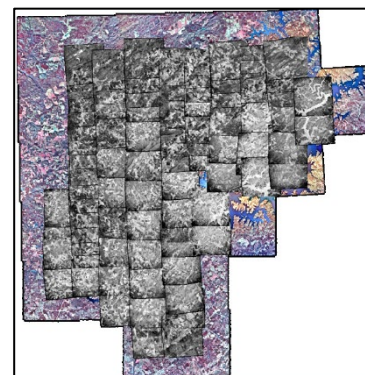


GEORGIAVIEW HISTORY AND SUCCESSES



Celebrating the Earth Observation Day with Coweta County Performance Learning Center Students.

Founded in 2003, the GeorgiaView Consortium is a member of the AmericaView Consortium, a nationally coordinated network of academic, agency, non-profit, and industry partners and cooperators that share the vision of promoting and supporting the use of remote sensing data and technology within each state. GeorgiaView's vision is to develop a collaborative geospatial user community in the state of Georgia, within which remote sensing datasets are practical sources for education, applications and research. GeorgiaView members have significantly impacted the State of Georgia through education, remote sensing and geospatial data sharing, research projects, and outreach efforts. GeorgiaView's mission will continue to prepare the future workforce for the dynamic geospatial technology fields by supporting K-12 STEM (science, technology, engineering and math) education, by addressing regional environmental challenges, and by developing collaborative outreach efforts.



Keeping the invaluable legacy of our history. This image is an example of an orthorectified mosaic of 1955-1956 historical airphotos covering the Forsyth County, Georgia that has been performed by Dr. Sharma's team at UNG.



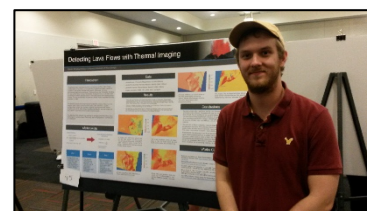
GeorgiaView member institutions.



Educating current workforce by offering drone image processing workshop for colleagues, companies, and graduate students.

AmericaView University

GeorgiaView has developed and maintained an online remote sensing course for the public that contains fourteen modules. Students and instructors from Ohio, California and Georgia have used the online course. URL: <http://www.avuniv.org>.



Supporting undergraduate student research with Landsat imagery and geospatial technology. Steven Whatley presents "Detecting Lava Flows with Thermal Imaging" at the UWG Scholar's Day in 2017.

GeorgiaView is a member of the AmericaView Consortium, a nationally coordinated network of academic, agency, non-profit, and industry partners and cooperators that share the vision of promoting and supporting the use of remote sensing data and technology within each state. AmericaView is funded by USGS grant agreement G18AP00077.



AmericaView Website:

www.AmericaView.org

Christopher McGinty, Executive Director:

chris.mcginty@americaview.org

Lisa Wirth, Program Manager:

lisa.wirth@americaview.org

Rebecca Dodge, Board Chair:

rebecca.dodge@msutexas.edu

GEORGIAVIEW CURRENT ACTIVITIES

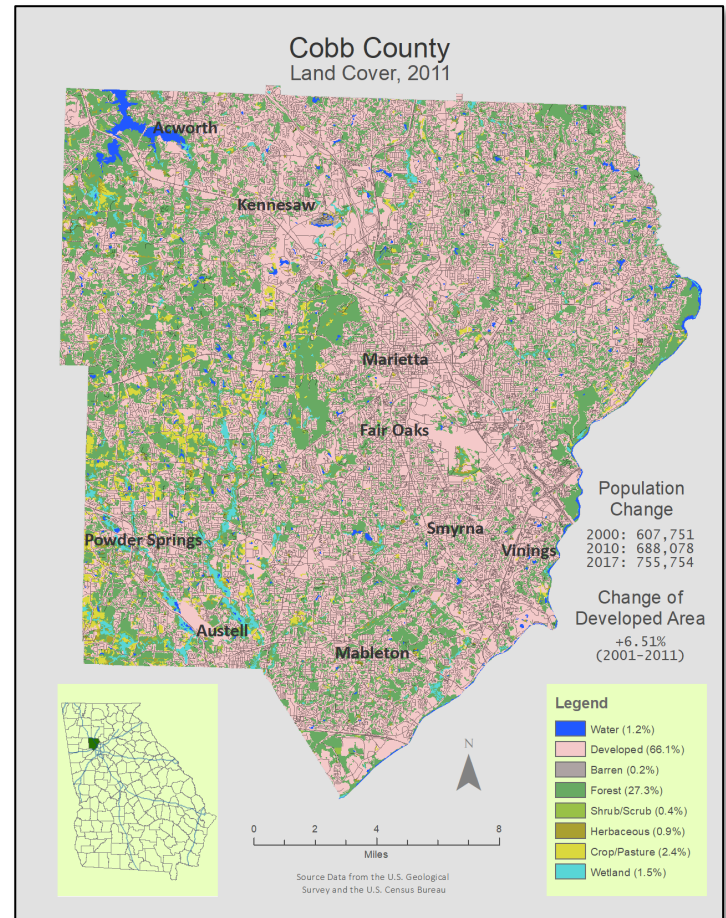
GeorgiaView's current activities can be highlighted into two categories. One is to make land cover maps for counties, congressional districts and regional commissions. Many people underestimate the extensive change of land cover in their living environment. Even if many online platforms provide land cover information, they are not reached to the public easily because of, mostly, technical limits. As a way of helping people's environmental awareness, intuitively and informatively, GeorgiaView will develop image atlas series using community boundaries in Georgia such as 159 counties, 14 congressional districts, and 12 regional commissions. As the first of its series, GeorgiaView will focus on urban and built-up areas. Landsat imagery, air photos, and the National Land Cover Database (NLCD) are critical datasets. Printed atlases will be delivered to Regional Commissions, Georgia State Departments, congressional offices, and libraries. This activity supports the National Land Remote Sensing Education Outreach and Research Activity (NLRSEORA) Objectives 4 and 3.

The other is to outreach to K-12 institutions with Landsat imagery, drone imaging, and remote sensing activities. GeorgiaView's efforts have brought strong impacts on our next generation and GeorgiaView will continue to promote STEM (Science, Technology, Engineering and Math) and more learning opportunities.

"I honestly liked this trip. I could actually see what college life is like! I was very peaceful. I haven't fully decided on whether I was going to college or not. After my trip today I think I found my decision. I hope they can continue to do this because I had an excellent experience. (A testimonial by Chage Teague, a former high school student at the Coweta County Performance Learning Center.)"



Professor J.B. Sharma at University of North Georgia has outreached to K-12 institutions to promote STEM education using Landsat satellite imagery.



An example of land cover map showing the Cobb County, Georgia. Situated at the northwest of metro Atlanta, the county's developed lands reached 66.1% in 2011, and the county's population growth has never stopped.



Undergraduate students, Jordan Woodall and Daniel Moye, are working on land cover mapping in the UWG GIS Lab. Mapping gives them the sense of placeness where they live as well as geospatial technology skills.

GeorgiaView Principal Investigator:

Dr. Jeong Seong

University of West Georgia

678-839-4069 (Office)

jseong@wesrtga.edu



<http://gaview.org>

